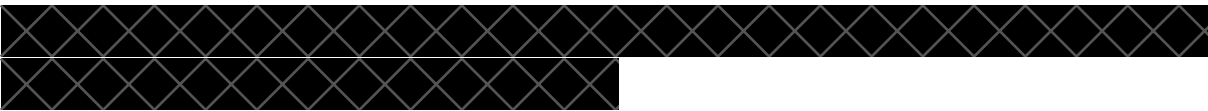


From: Village Concerns villageconcerns2016@gmail.com
Subject: Village Concerns Update 124 - More Land for Development
Date: 30 September 2021 at 15:30
To: [REDACTED]



Dear Supporter,

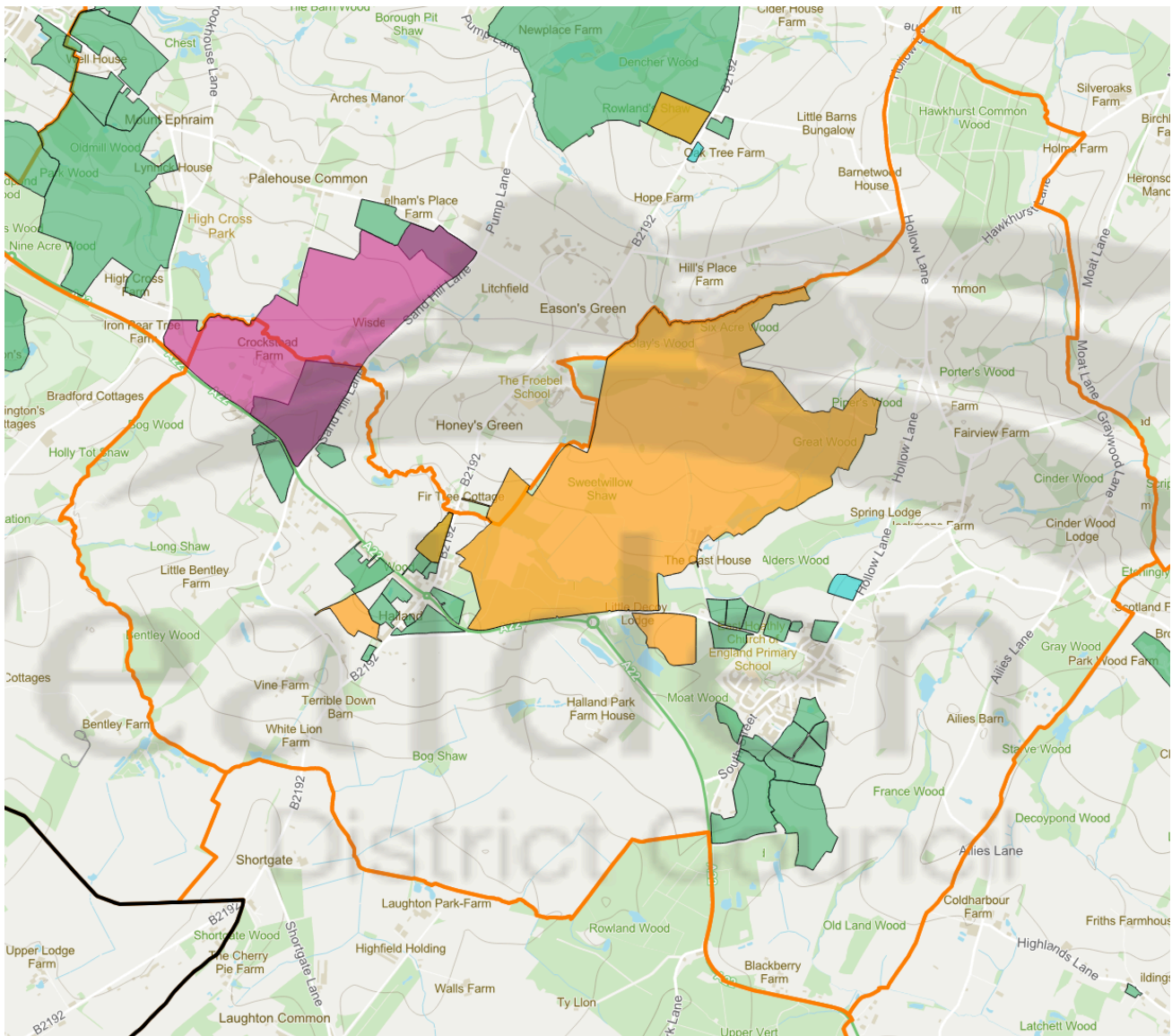
We have learnt some alarming news regarding future development in our Parish. Wealden have been in discussion with Developers Parker Dann to seek to add land for housing development to that already put forward in this Parish. There have been 2 additional parcels of land already submitted since our last map was published and more are expected. This map shows the latest situation but you should note that Wealden District Council are actively seeking to add land to this map for even more development. The land already put forward by Parker Dann is for 3000 homes and they have very distastefully chosen to call it Hesmond's Village. The number of homes in the Parish prior to the Juzier/Nightingales developments was around 500. With all the currently approved and pending applications it will be around 1100. Wealden are now looking at the possibility of an additional 3000 but want to add further land to this. This would result in a New Town. As far as we are aware, our District Councillor and Parish Council have not been informed or consulted on this matter.

Wealden have created a relationship with Parker Dann who are contacting landowners directly. In their approach to landowners Parker Dann state "We have been engaged with the Council's Planning Policy Officers regarding the potential inclusion of the site within the emerging Local Plan and have had a series of meetings to this end. The Council have asked that we explore the possibility of enlarging the potential site".

We feel that this proposal is monstrous and wrong. We feel that

the way wealden are pursuing this is abhorrent and wrong. We do not feel that this is the way you should be informed of such a devastating proposition. We have challenged Wealden on this and received a pathetic answer to which we have posed further questions.

We will continue to challenge Wealden, pursue our Judicial Review and urge our District Councillor and Parish Council to take up the fight. Other groups are emerging to fight against similar ideas for Upper Dicker, East Chiltington and Heathfield - we are making contact to exchange ideas. We suggest that if this enflames you, then write to our MP, the press, The Tooth Fairy, to anyone you think might listen.



The Green represents land put forward for development previously. Some of this has now been given planning permission and the remainder is being reconsidered for future developments by Wealden. The Yellow represents land put forward in 2020 for new development. The Purple and Turquoise represents new land put forward in 2021.

You are in receipt of this email because you have previously requested to be part of Village Concerns email list. If you no longer wish to receive these emails, please let us know.